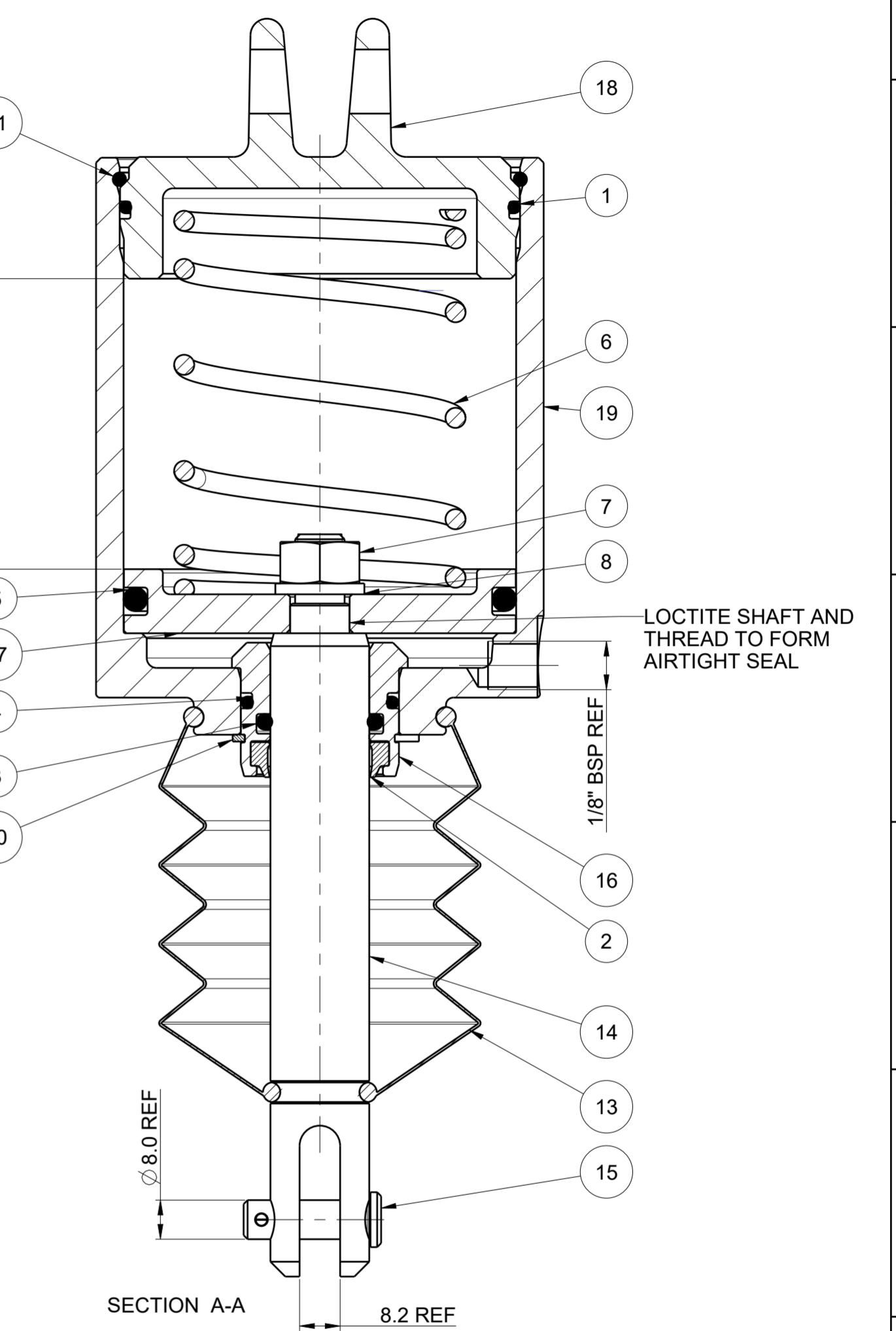
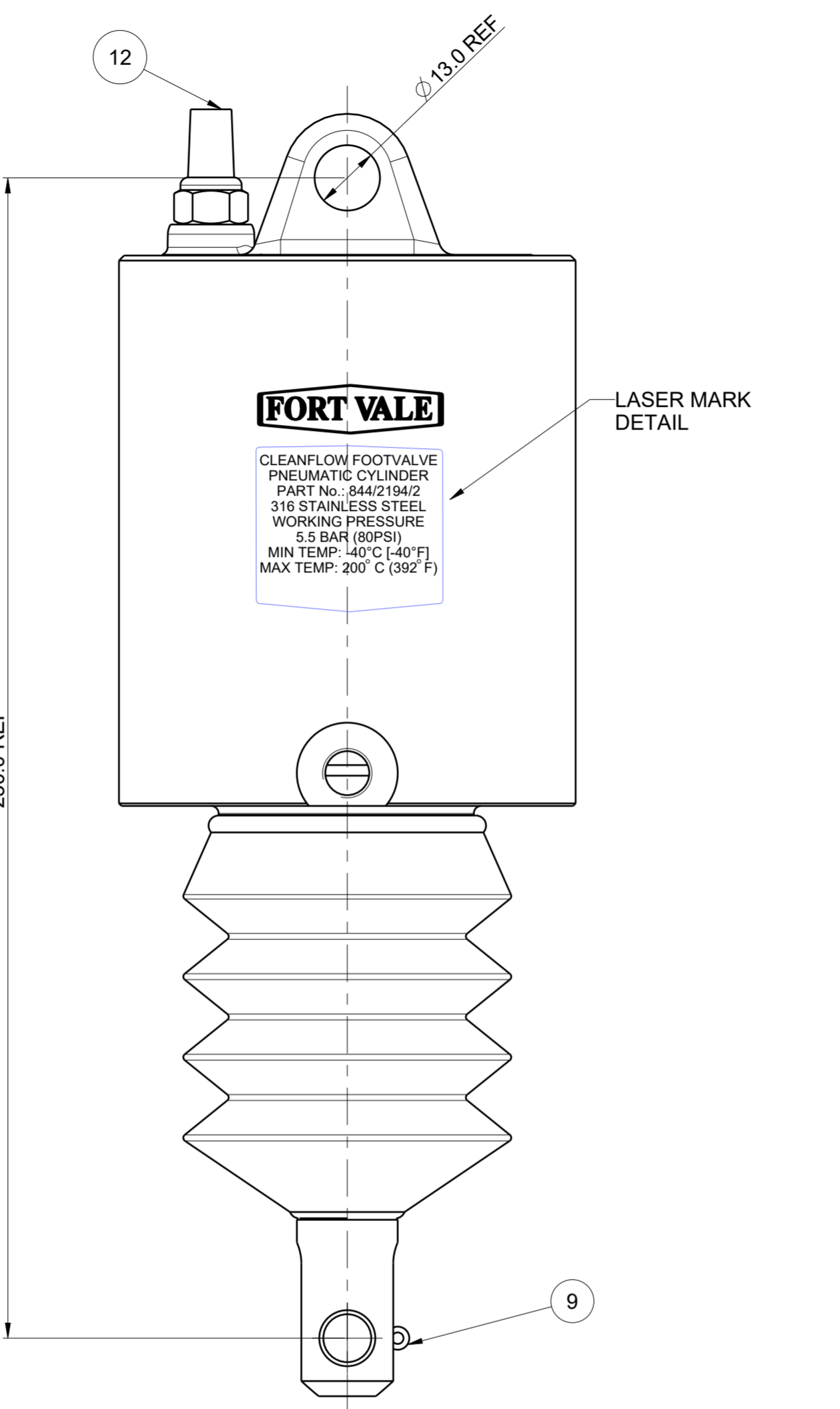
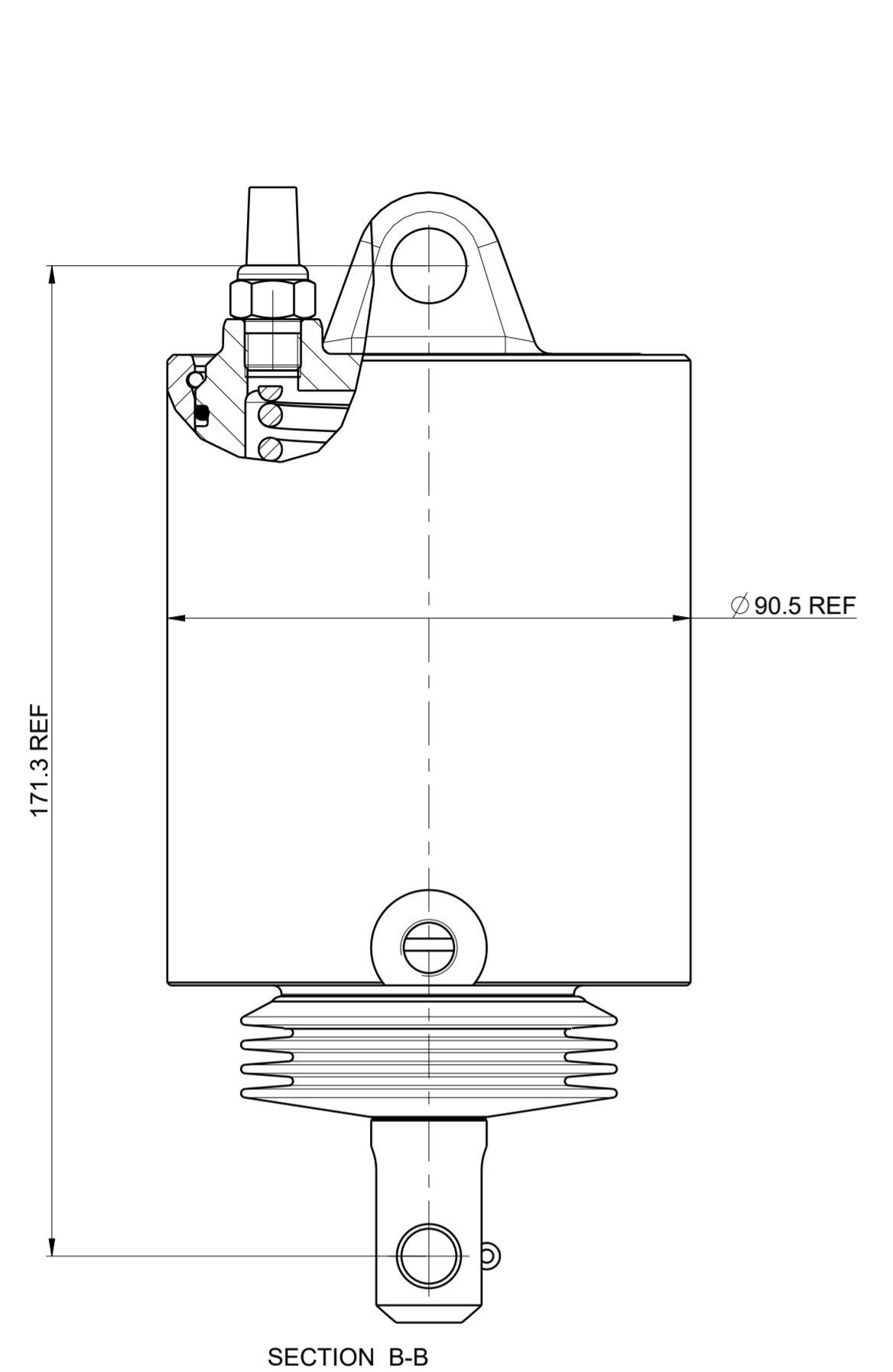


DRAWING STATUS		Production	
REVISION	05	SIG	M HUGHES
			05-Nov-18
178/0501HT/1 WAS 178/0501 AND NOTE ADDED [5:A]			




19	875/2129	3" PULL CYLINDER BODY	CF3M (316L STST)	1
18	844/2182	REAR CYLINDER FLANGE	316 STST	1
17	844/2162	PISTON BODY	60/40 BRASS	1
16	844/2122	GUIDE BUSH PNEUMATIC CYLINDER	BRASS	1
15	844/2119	CLEVIS PIN	304 STST	1
14	844/2102	CYLINDER ROD	316 STST	1
13	178/0501HT/1	BELLOWS	NATURAL RUBBER	1
12	5128-065	1/8" BSP SILENCER	BRASS	1
11	5120-038	RETAINING RING CLIP	316 STST	1
10	5120-026	CIRCLIP D1400-0320SS	316 STST	1
9	5118-016	3/32" SPLIT PIN	316 STST	1
8	5113-002A4	M10 FLAT SECTION SP/WASHER ST	316 STST	1
7	5112-002S	M10 FULL NUT	316 STST	1
6	5104-081	CYLINDER RETURN SPRING	STAINLESS STEEL	1
5	5005-714HTS	BS 335 'O' RING HIGH TEMP SILICONE	HIGH TEMP Si RUBBER	1
4	5005-692HTS	BS 121 'O' RING SILICONE HIGH TEMP	HIGH TEMP Si RUBBER	1
3	5005-691HTS	BS 210 'O' RING SILICONE HIGH TEMP	HIGH TEMP Si RUBBER	1
2	5005-680V	VITON WIPER SEAL	VITON	1
1	5005-165HTS	BS 151 'O' RING HIGH TEMP SILICONE	HIGH TEMP Si RUBBER	1
Index	Part Number	Description	Material	Qty

Assembly BOM

DESIGN CODE : ASME VIII DIV 1
 DESIGN PRESSURE (MAWP) : 5.5barg (80psig)
 SERVICE TEST PRESSURE : 8.25barg (120psig)
 MAX DESIGN TEMPERATURE : 200°C (392°F)
 MIN DESIGN TEMPERATURE : -55°C (-67°F)

ASSEMBLY NOTE!
 USE ROCOL SAPPHIRE PREMIER GREASE ON INTERNAL CYLINDER SURFACE AND SHAFT
 GREASE RATED -40°C TO 200°C
 SHAFT 844/2102 NEEDS ASSEMBLING WITH PISTON 844/2162 IN THE CYLINDER BODY

NOTE!
 AS THIS UNIT IS NOT AN INTEGRAL PART IT CAN BE USED ON A VALVE ASSEMBLY THAT IS RATED UP TO 250°C



SALES@FORTVALE.COM WWW.FORTVALE.COM

ENGLAND, USA, CHINA
NETHERLANDS, SINGAPORE

© FORT VALE ENGINEERING LTD 2018.

UNLESS OTHERWISE STATED		FIRST ANGLE PROJECTION		MATERIAL: 316 STST	
X.X ±0.5	SURFACE FINISH 3.2um MAX	ISO9001:2008 REGISTERED FIRM: LRQ4007111		SCALE: NTS	MASS: 3.05 kg
X.XX ±0.25	CORNER RADI 0.8			CHECKED	DVN: 31830
X.XXX ±0.125	CORNER CHAMFER 1.0 X 45°			SHEET 1 OF 1	
ANGLES ±0.5°	REMOVE ALL BURRS AND SHARP EDGES	DESCRIPTION		DRAWN BY: IA DATE: 11-Feb-11	
PNEUMATIC PULL CYLINDER				DRG.NO.	
CLEANFLOW				844/2194/2	