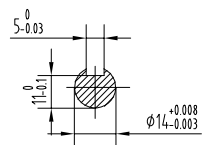


Technical request:

- a.Voltage: 440V
- b.Frequency: 60Hz
- c.Mounting: IMB5
- d.Cooling: IC411
- e.Protection: IP66
- f.Iso.: H
- g.Duty: S1

A-A



Model	Power (kW)	Voltage (V)	Current (A)	Speed r/min	EFF %	PF COSφ	$\frac{I_{st}}{I_n}$	$\frac{T_m}{T_n}$	$\frac{I_{st}}{I_n}$
YB3-71M2-6	0.22	440	0.69	1020	62.0	0.67	1.9	2.1	4.0

YB3-71M2-4	G20-0291B		
Dimension Drawing			
Ex d IIC T4 Gb	Page		
	Shanghai Pinxing Explosion-proof Motor Co.,Ltd		